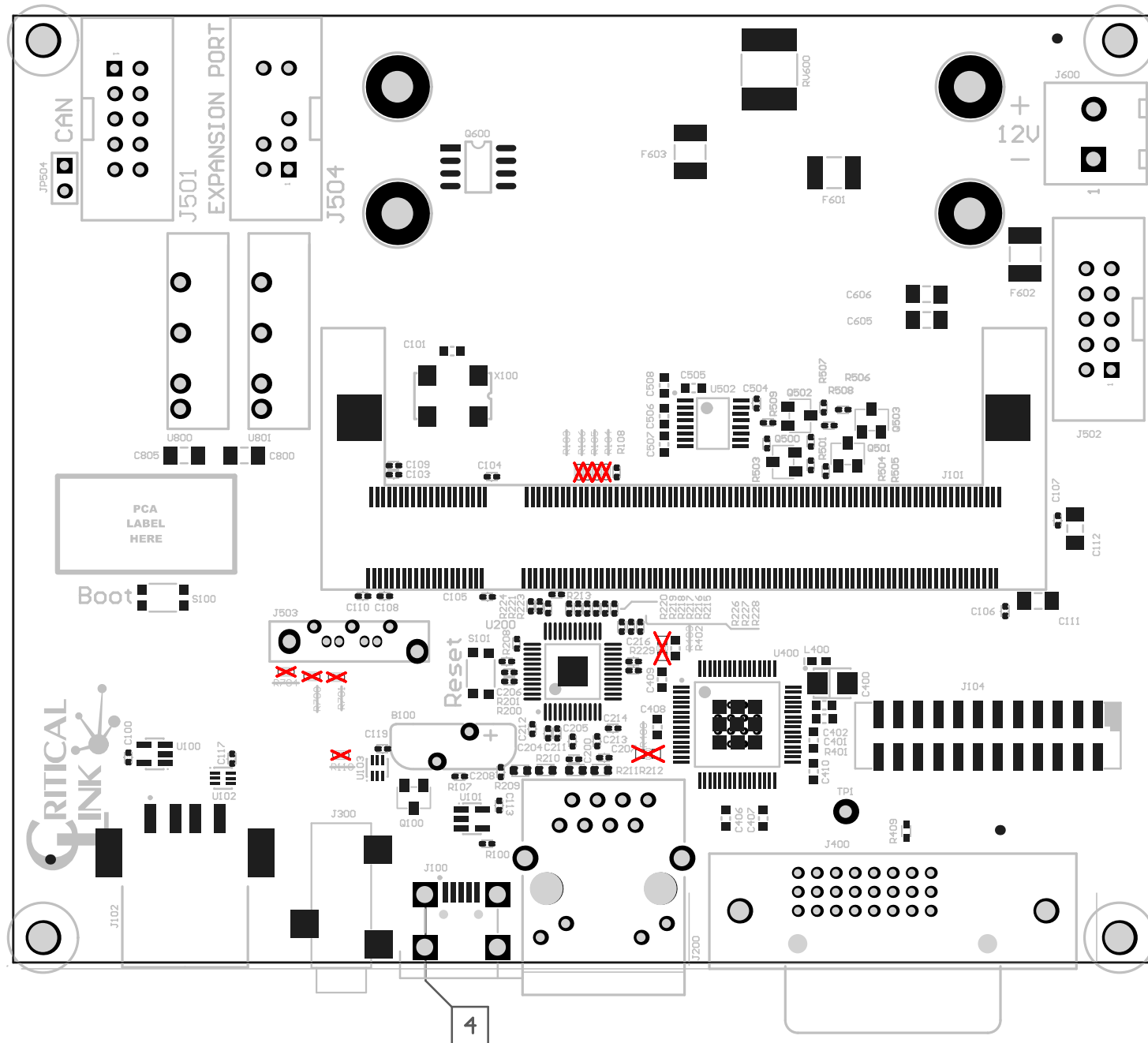
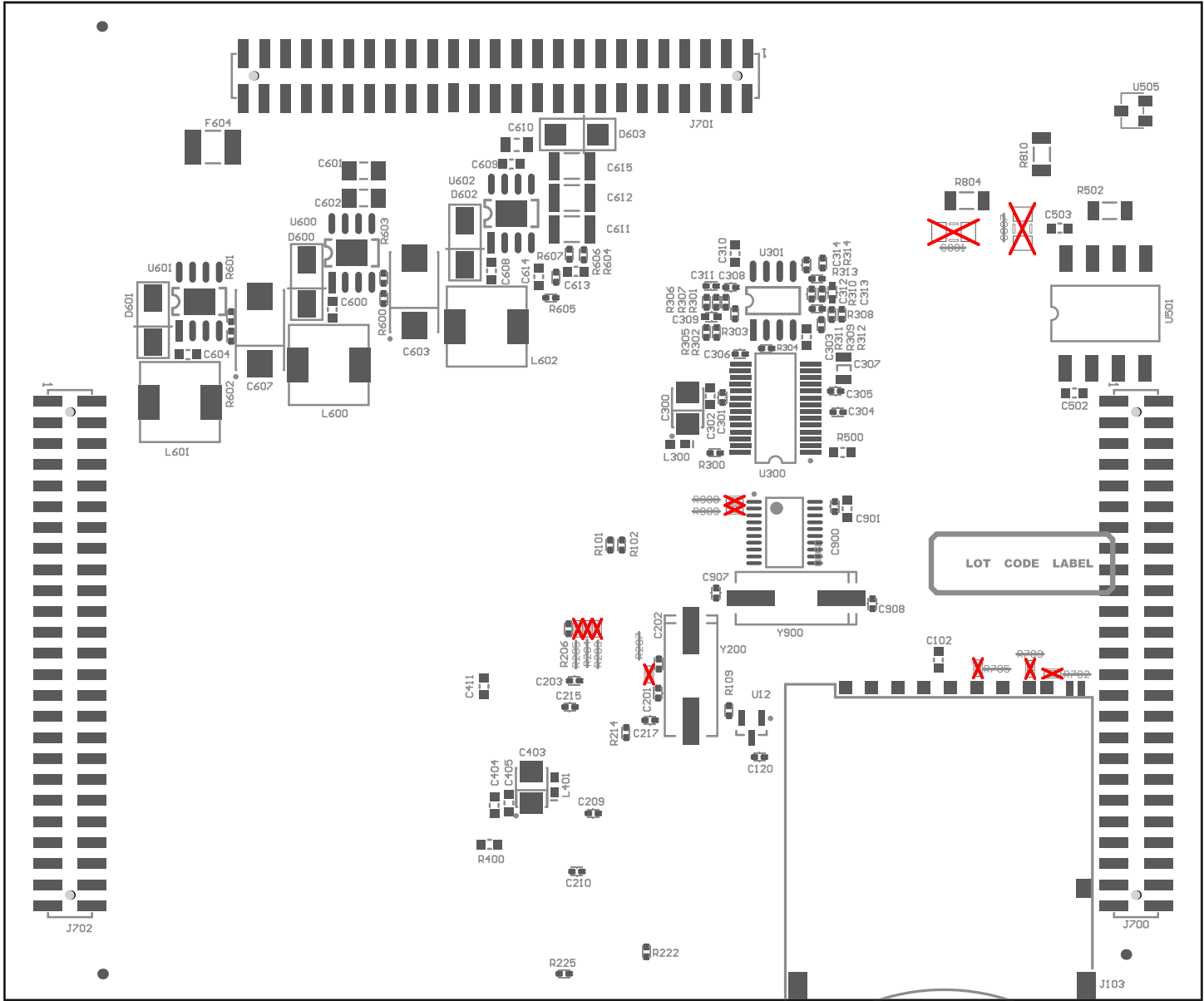


All dimensions are in mils (0.001") unless otherwise specified.
Tolerance on all dimensions shall be ± 0.005 " unless otherwise specified.

Assembly Notes:

1. Assemble board per IPC A-610C Class II.
2. RoHS compliant, Lead-Free solder process required.
3. Assembly should be flux and residue free
4. Inspect J100 for proper solder flow around through hole pins





ENGINEER: AChkourko	TITLE: PCB,OMAP Industrial IO board			 Critical Link, LLC 6712 Brooklawn Pkwy Syracuse, NY 13211 315.425.4045 www.criticallink.com	
PCB DESIGNER: ACHKOURKO					
DATE: 11/7/2014	PART NO.: 80-000268RI-3	REV: B	SIZE: A		
FILE NAME: IndustrialIO.PcbDoc	PRINT NAME: Bottom Assembly Drawing	SCALE: SCALE: 1.00			