

# User's Guide

## AWR2544LOP Evaluation Module



### Table of Contents

<b>1 Getting Started</b> .....	2
1.1 Introduction.....	2
1.2 Key Features .....	2
1.3 What's Included.....	2
<b>2 Hardware</b> .....	3
2.1 Block Diagram.....	6
2.2 PCB Handling Recommendations.....	6
2.3 Power Connections.....	7
2.4 Connectors.....	7
2.5 Antenna.....	16
2.6 PMIC.....	19
2.7 On-Board Sensors.....	19
2.8 PC Connection.....	19
2.9 Connecting the AWR2544LOPEVM to the DCA1000 EVM.....	22
2.10 Jumpers, Switches, and LEDs.....	24
<b>3 Design Files and Software Tools</b> .....	29
3.1 Design Files.....	29
3.2 Software, Development Tools, and Example Code.....	29
<b>4 Revision History</b> .....	29

### Trademarks

ARM® and Cortex® are registered trademarks of Arm Limited.  
Windows® is a registered trademark of Microsoft.  
All trademarks are the property of their respective owners.

# 1 Getting Started

## 1.1 Introduction

The AWR2544LOPEVM is an easy-to-use evaluation board for the AWR254x mmWave sensing device, with direct connectivity to the [DCA1000 EVM](#). This EVM kit contains everything needed to start developing software for the on-chip ARM® Cortex®-R5F controller, and hardware accelerator (HWA 1.5). Also included is on-board emulation for programming and debugging as well as on-board buttons and LEDs for quick integration of a simple user interface.

## 1.2 Key Features

- Golden Devices 3D waveguide antenna
- XDS110 based JTAG emulation with Serial port for onboard 64-bit QSPI flash programming
- UART to USB Debug port for terminal access using FT4232H
- 60-pin, high-density (HD) connector for external JTAG/ Emulator Interface with TRACE and CSI2 support
- 60-pin, high-density (HD) connector for debug, SPI, I2C and LVDS
- RJ45 connector to stream the captured data over the network to the host PC
- MATEnet Ethernet interface to stream the captured data over the network to an automotive host
- One button and LED for basic user interface
- 12V power jack to power the board

## 1.3 What's Included

### 1.3.1 Kit Contents

- AWR2544LOPEVM
- 3D waveguide Antenna
- Micro USB cable
- Ethernet Cable
- Mounting brackets, screws, spacers and nuts, to allow placing the PCB vertical

---

#### Note

A 12V, > 2.5-A supply brick with a 2.1-mm barrel jack (center positive) is not included. TI recommends using an external power supply that complies with applicable regional safety standards, such as UL, CSA, VDE, CCC, PSE, and more. The length of the power cable should be < 3 m.

---

The following power supply has been tested to work with the AWR2544LOPEVM: **SDI65-12-U-P5**.

### 1.3.2 mmWave Out-of-Box (OOB) Demo

TI provides sample demo codes to easily get started with the AWR2544LOP evaluation module (EVM) and to experience the functionality of the AWR2544LOP radar sensor. For details on getting started with these demos, see [www.ti.com/tool/mmwave-sdk](http://www.ti.com/tool/mmwave-sdk).

## 2 Hardware



CAUTION HOT SURFACE  
CONTACT MAY CAUSE BURN  
DO NOT TOUCH

---

### Note

During operation, a minimum separation distance of 20 centimeters must be maintained between the user and the EVM.

---

ADVANCE INFORMATION

ADVANCE INFORMATION

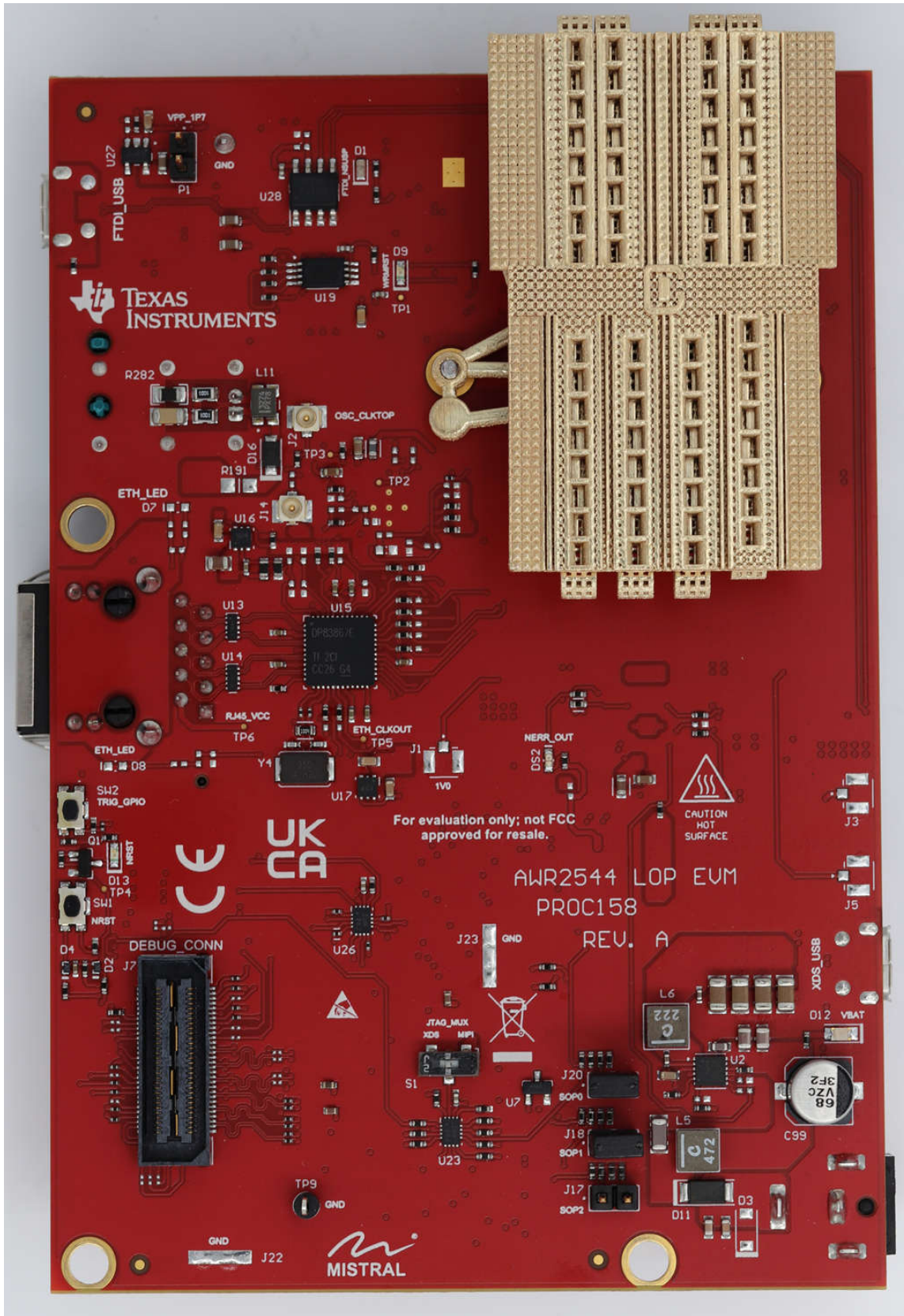
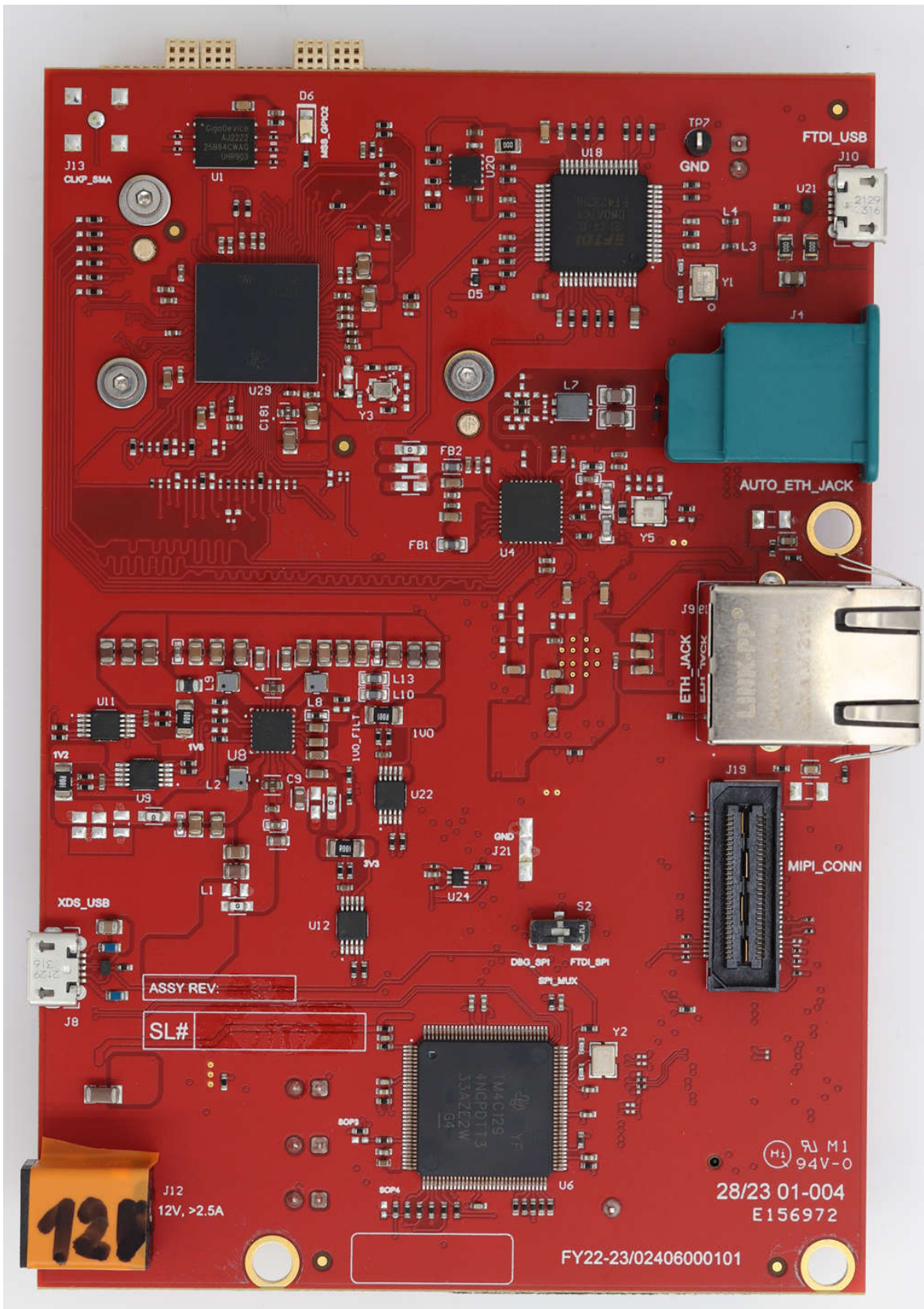


Figure 2-1. AWR2544LOPEVM Front View



ADVANCE INFORMATION

Figure 2-2. AWR2544LOPEVM Back View

## 2.1 Block Diagram

ADVANCE INFORMATION

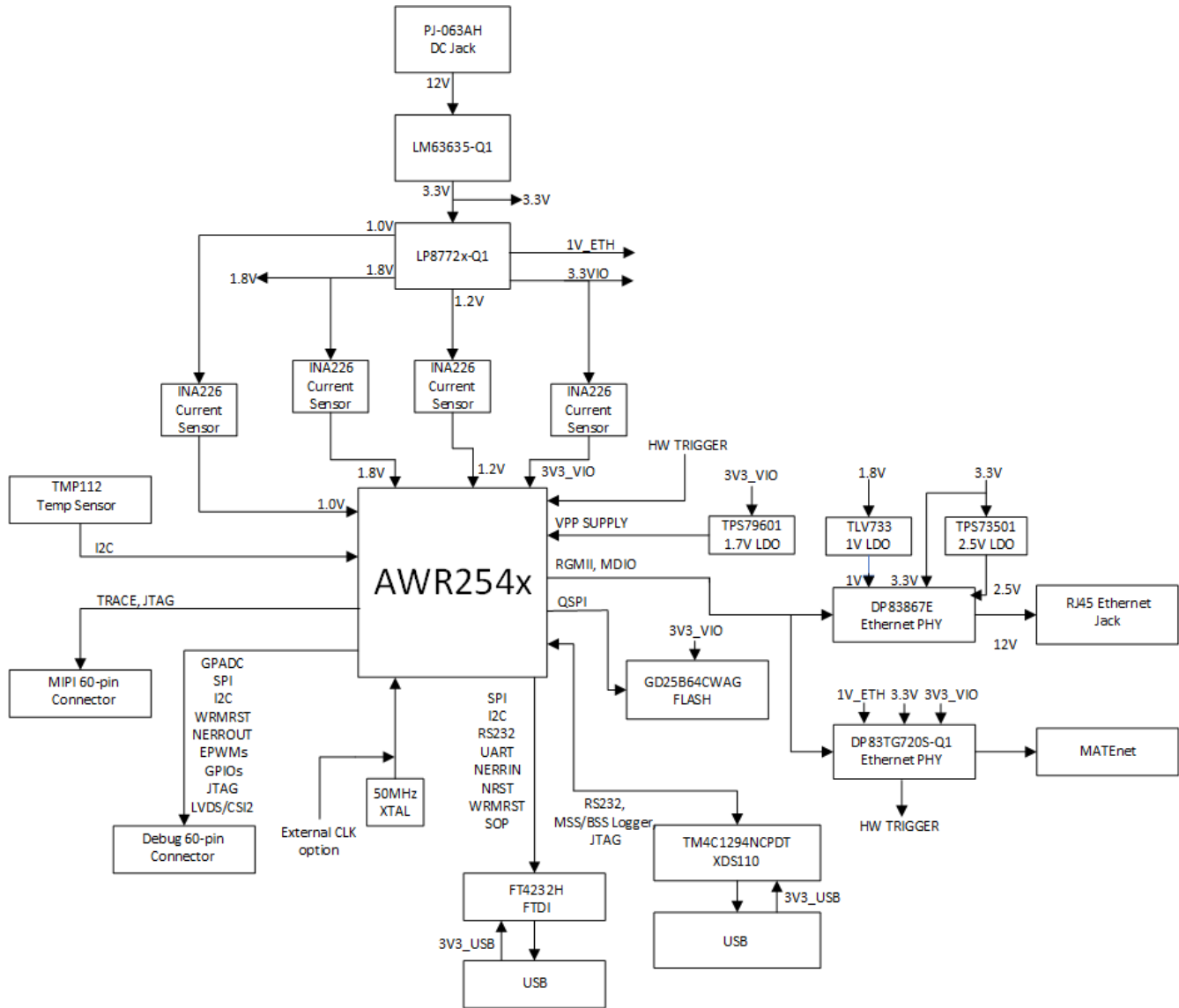


Figure 2-3. AWR2544LOPEVM Block Diagram

## 2.2 PCB Handling Recommendations

This EVM contains components that can potentially be damaged by electrostatic discharge. Always transport and store the EVM in the supplied ESD bag when not in use. Handle using an antistatic wristband. Operate on an antistatic work surface. For more information on proper handling, refer to [SSYA010A](#).

## 2.3 Power Connections

The AWR2544LOPEVM is powered by the 12-V power jack (>2.5-A current capability). When power is provided the AR\_NRST, VBAT\_INT, and 5V0 LEDs glow, indicating that the board is powered up.

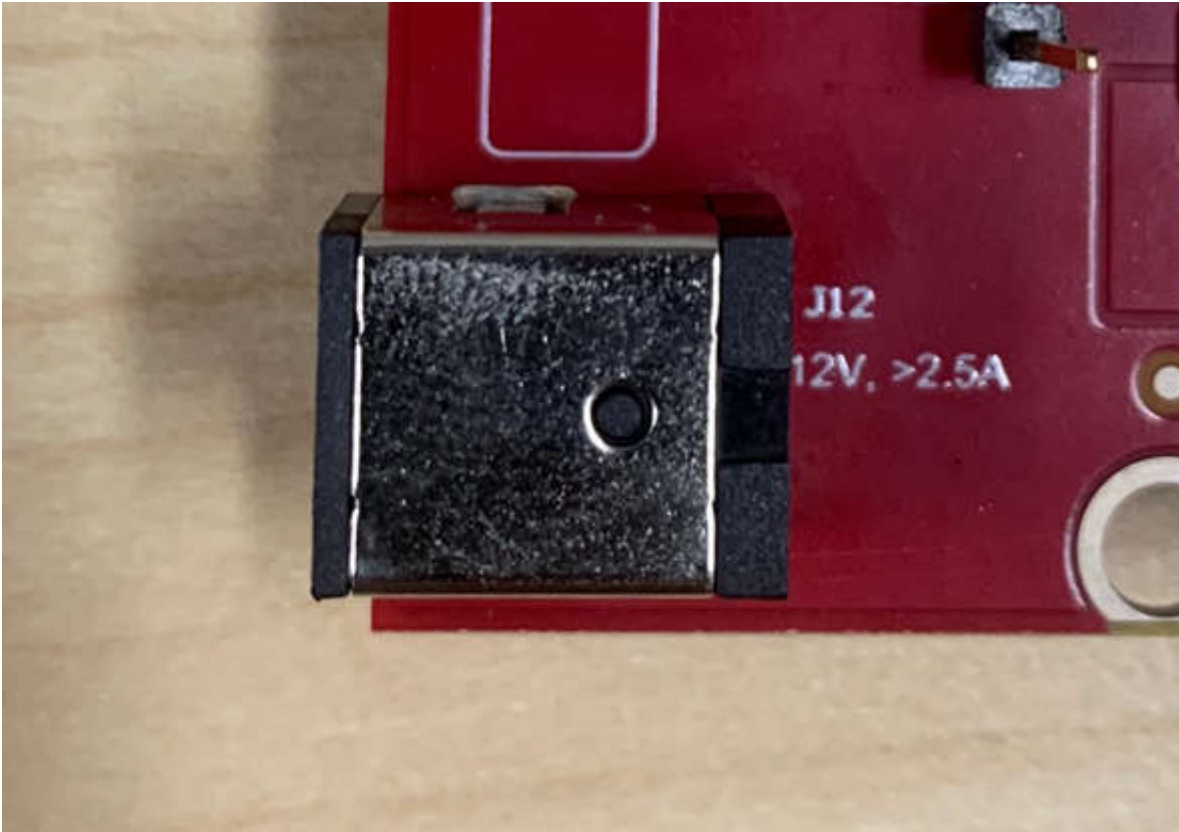


Figure 2-4. 12-V Power Connector

---

### Note

After the 12-V power supply is provided to the EVM, TI recommends to press the NRST switch (SW1) one time to provide for a reliable boot-up state.

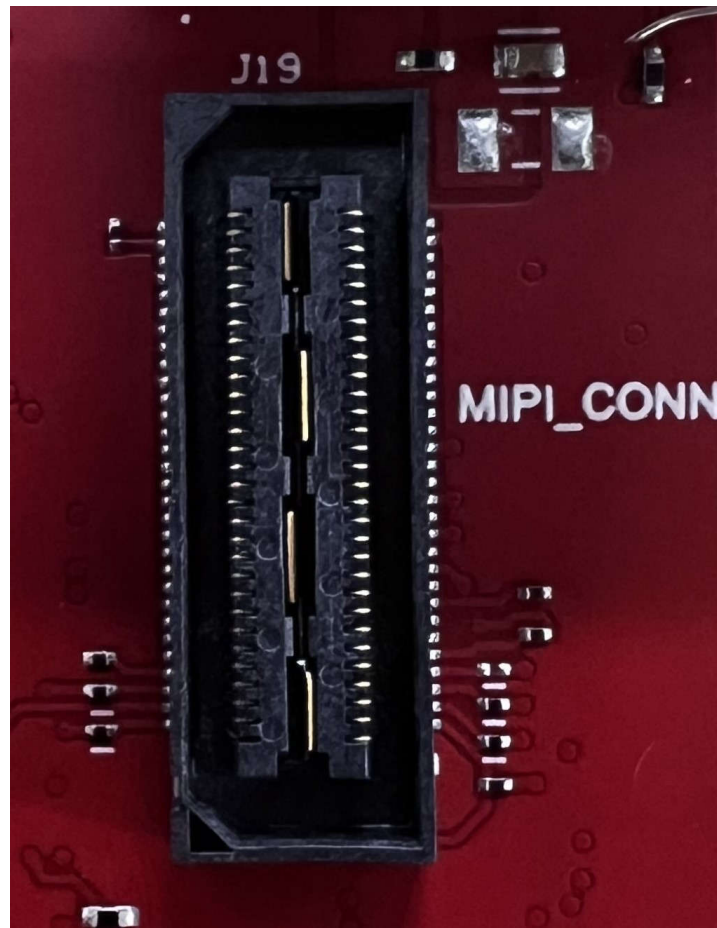
---

## 2.4 Connectors

### 2.4.1 MIPI 60-Pin Connector (J19)

This connector provides the standard MIPI 60-pin interface, as shown in Figure 5, for JTAG and trace capability through emulators such as the XDS560pro. Further information on the emulation and trace header can be found in the [Emulation and Trace Headers Technical Reference Manual](#).

To use this interface, the JTAG lines from the AWR2544LOPEVM needs to be muxed to MIPI 60-pin connector. Refer to [Section 2.8.1](#) for more details.



**Figure 2-5. 60-pin MIPI Connector**

Table 2-1 provides the pin assignment details for the MIPI 60-pin connector.

**Table 2-1. J19 Pin Assignment**

Pin Number	Description	Pin Number	Description
1	MIPI_VREF_DEBUG	2	MIPI_TMS
3	MIPI_TCK	4	MIPI_TDO
5	MIPI_TDI	6	MIPI_NRST
7	MIPI_RTCK	8	MIPI_TRSTPD
9	MIPI_JTAG_NRST	10	NC
11	NC	12	MIPI_VREF_DEBUG
13	TRACE_CLK	14	NC
15	MIPI_DBG_DETECT	16	GND
17	TRACE_CTL	18	NC
19	TRACE_DATA0	20	NC
21	TRACE_DATA1	22	NC
23	TRACE_DATA2	24	NC
25	TRACE_DATA3	26	NC
27	TRACE_DATA4	28	NC
29	TRACE_DATA5	30	NC
31	TRACE_DATA6	32	NC
33	TRACE_DATA7	34	NC
35	NC	36	NC



**Table 2-1. J19 Pin Assignment (continued)**

Pin Number	Description	Pin Number	Description
37	NC	38	NC
39	NC	40	NC
41	NC	42	GND
43	NC	44	NC
45	NC	46	NC
47	NC	48	GND
49	NC	50	NC
51	NC	52	NC
53	NC	54	GND
55	NC	56	NC
57	GND	58	NC
59	NC	60	GND

#### **2.4.1.1 MIPI TRACE ECO List**

By default, the TRACE signals are not brought out to the MIPI Connector. To enable the TRACE interface on the MIPI Connector, the following changes should be made.

1. Remove R165 and populate R216
2. Remove R218 and populate R220
3. Populate R227
4. Populate R231
5. Remove R233 and populate R235
6. Populate R217
7. Remove R21 and populate R221
8. Remove R25 and populate R228
9. Populate R232
10. Populate R236

#### **2.4.2 Debug Connector-60 pin (J7)**

This connector enables interfacing of LVDS signals to the DCA1000 EVM for data capturing purposes.

Also, the connector has SPI, I2C, JTAG, GPADC, WRMRST, NRROUT, EPWM, and other control signals from AWR2544LOPEVM for debug purpose.

The SPI is multiplexed to the Debug Connector. For more details refer to [Section 2.8.1](#).

The debug connector supports direct connection to the TMDS273GPEVM for CSI2 data processing. For more details refer to [CSI2 FE Connector ECO List](#).

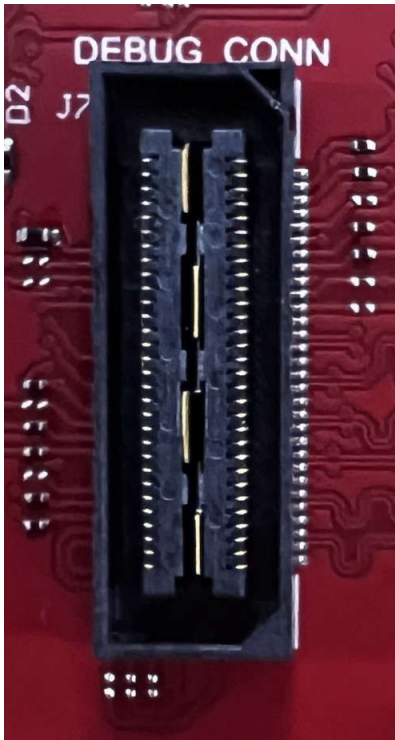


Figure 2-6. 60-pin Debug Connector

Table 2-2 provides the pin assignment details for the Debug 60-pin connector.

**Table 2-2. J7 Pin Assignment**

Pin Number	Description	Pin Number	Description
1	NC	2	NC
3	NC	4	XREF_CLK0
5	GND	6	MSS_EPWMA0
7	DBG_SPI_CS0	8	GND
9	DBG_SPI_CLK	10	MSS_SPIA_HOSTIRQ
11	DBG_SPI_PICO	12	DBG_SPI_POCI
13	3.3V PULL_UP	14	XREF_CLK1
15	EMU_TCK	16	AR_SYNCIN
17	EMU_TDI	18	GND
19	GPADC1	20	EMU_TMS
21	GPADC2	22	EMU_TDO
23	NC	24	GND
25	NC	26	CSI2_TX2_CLK_LVDS_FRCLK_P
27	GPADC5	28	CSI2_TX2_CLK_LVDS_FRCLK_N
29	GPADC6	30	GND
31	NC	32	CSI2_TX3_P
33	MCU_CLKOUT	34	CSI2_TX3_N
35	NC	36	GND
37	MSS_SPIB_CS1	38	CSI2_TX2_CLK_LVDS_FRCLK_P
39	SOP1_MSS_SPIB_CS2	40	CSI2_TX2_CLK_LVDS_FRCLK_N
41	MSS_GPIO_0	42	GND
43	MSS_GPIO_1	44	CSI2_TX4_LVDS_CLK_P
45	AR_WRM_RST	46	CSI2_TX4_LVDS_CLK_N
47	NC	48	GND
49	AR_NERROUT	50	CSI2_TX1_LVDS_TX1_P
51	MSS_I2CA_SCL	52	CSI2_TX1_LVDS_TX1_N
53	MSS_I2CA_SDA	54	
55	MSS_EPWMB0	56	CSI2_TX0_LVDS_TX0_P
57	MSS_EPWMA1	58	CSI2_TX0_LVDS_TX0_N
59	MSS_GPIO_3	60	GND

#### 2.4.2.1 CSI2 FE Connector ECO List

This connector can also support a direct connection to the TMDS273GPEVM high density FE connectors (J1 and J11) for CSI2 raw data streaming. In order to properly interface with the FE connector, the following changes should be made.

1. Populate R51
2. Populate R135
3. Remove R351 and populate on R138
4. Remove R361 and populate on R160
5. Populate R164
6. Populate R167

### 2.4.3 Ethernet Ports (J4 and J9)

The AWR2544LOPEVM supports two RGMII Ethernet ports to provide the connection to the network. The J4 connector provides access over a MATEnet port (9-2304372-9 connector) via a DP83TC812R-Q1 PHY. The J9 port provides access over an RJ45 port via a DP83867ERGZR PHY. By default, the RGMII interfaces are connected to the J9 port only. To access the RGMII interface, over the J4 connector several resistors must be populated. For more details please see [Section 2.4.3.1](#) and refer to the Schematic, BOM, and Assembly and Database and Layout sections.

This RGMII interface is intended to operate primarily as a 100Mbps ECU interface and can also be used as an Instrumentation Interface.

The RGMII interface supports following features:

- Full Duplex 10Mbps/100Mbps wire rate Interface to Ethernet PHY over RGMII, parallel interface
- MDIO Clause 22 and 45 PHY management interface
- IEEE 1588 Synchronous Ethernet support

The Ethernet port is interfaced to the AWR2544 through the Ethernet PHY and is used to stream the captured data over the network to the host PC.

[Figure 2-7](#) shows the Ethernet RJ45 Mag-Jack connector, and [Table 2-3](#) provides the connector pin details.

**Table 2-3. J9 Pin Assignment**

Pin Number	Description	Pin Number	Description
1	GND	2	Test point
3	ETH_D4P	4	ETH_D4N
5	ETH_D3P	6	ETH_D3N
7	ETH_D2P	8	ETH_D2N
9	ETH_D1P	10	ETH_D1N
11	LED_ACTn	12	GND
13	GND	14	LED_LINKn
15	ETH_GND	16	ETH_GND



**Figure 2-7. RJ45 Connector**

[Figure 2-8](#) shows the Ethernet MATEnet connector, and [Table 2-4](#) provides the connector pin details.

Table 2-4. J4 Pin Assignment

Pin Number	Description	Pin Number	Description
1	TRD_P	2	TRD_M
S1	GND	S2	GND
S3	GND	S4	GND
S5	GND	S6	GND

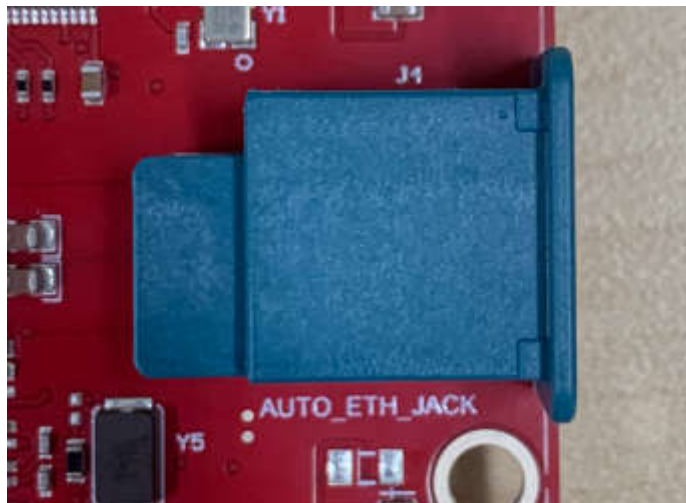


Figure 2-8. MATEnet Connector

#### 2.4.3.1 ECOs to Enable the DP83TG720S-Q1 PHY

By default, the board is designed to be used with the DP83867E PHY with the RJ45 connector. To enable the DP83TG720S-Q1 PHY with the MATEnet connector, the following hardware changes must be made. For help with locating these components on the PCB, refer to the provided Schematic, BOM, and assembly files.

1. Remove R98 and populate on R74
2. Remove R101 and populate on R230
3. Remove R103 and populate on R96
4. Remove R105 and populate on R100
5. Remove R121 and populate on R178
6. Remove R122 and populate on R225
7. Remove R195 and populate on R245
8. Remove R290 and populate on R234
9. Remove R325 and populate on R237
10. Remove R336 and populate on R238
11. Remove R338 and populate on R239
12. Remove R339 and populate on R240
13. Remove R413 and populate on R247
14. Remove R369 and populate on R249
15. Populate D18 and D19 ESD diodes
16. Populate C55
17. The bootstrap configuration pins can be populated/removed as needed depending on the use case

#### Note

The automotive Ethernet PHY (U4) and port (J4) on the AWR2544LOPEVM have not been tested by Texas Instruments to be compliant with any regional standards such as Radio Equipment Directive 2014/53/EU. If the user wishes to populate the components necessary to utilize this port, it is up to the user to do any necessary testing to ensure that the port is compliant with all applicable regional standards before use. Any modifications done to enable the J4 port will invalidate the existing RED 2014/53/EU certification of the AWR2544LOPEVM.

### 2.4.4 USB Connectors (J8, J10)

The AWR2544LOPEVM has two standard micro USB connectors.

Micro USB Connector J10 provides access to the AWR2544 UART, SPI, I2C, RS232, and SOP interfaces through the FTDI chip.

**Table 2-5. J10 Pin Assignment**

Pin Number	Description	Pin Number	Description
1	FTDI_VBUS	2	FTDI_USBD_N
3	FTDI_USBD_P	4	FTDI_USBDID
5	GND	6	GND
7	GND	8	GND
9	GND	10	GND
11	GND		

ADVANCE INFORMATION



**Figure 2-9. FTDI USB Port**

Micro USB connector J8 provides access to the JTAG, MSS\_UARTA, and MSS\_UARTB interfaces of the AWR2544 via the XDS110 emulator.

This is the UART interface used to flash the binary to the onboard serial flash and for Out-of-box (OOB) demo.

**Note**

The OOB demo requires only J8 to be connected to the PC. J10 is not used for the OOB demo.

**Table 2-6. J8 Pin Assignment**

Pin Number	Description	Pin Number	Description
1	XDSET_VBUS	2	XDSET_D_N
3	XDSET_D_P	4	XDSET_ID
5	GND	6	GND
7	NC	8	NC
9	GND	10	GND
11	GND		



**Figure 2-10. XDS USB Port**

#### 2.4.5 OSC\_CLK\_OUT Connector (J2)

Connector J2 provides access to measure oscillator clock out signal from the AWR2544 device.



**Figure 2-11. OSC\_CLK\_OUT Port**

### 2.4.6 OSC\_CLK\_OUT\_ETH Connector (J14)

Connector J14 provides access to measure the oscillator clock Ethernet out signal from the AWR2544 device. To enable this connection R95 must be populated.

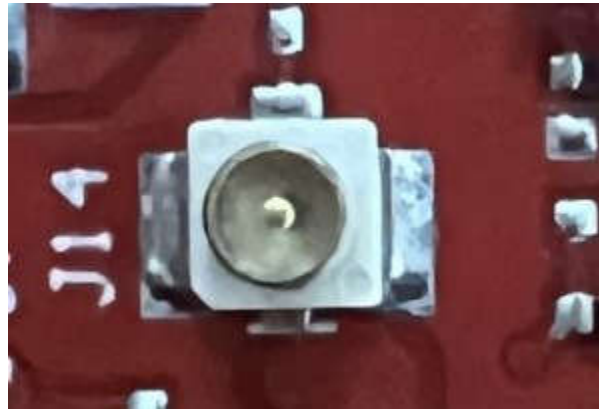


Figure 2-12. OSC\_CLK\_OUT\_ETH Connector

### 2.4.7 Voltage Rails Ripple Measurement Connectors (J1, J3, J5) (DNP)

J1 Provides access to measure ripple on 1V0\_FILTERED (1.0V analog RF supply for AWR2544) voltage rail.

J3 Provides access to measure ripple on 1V2\_FILTERED (1.2V digital supply for AWR2544) voltage rail.

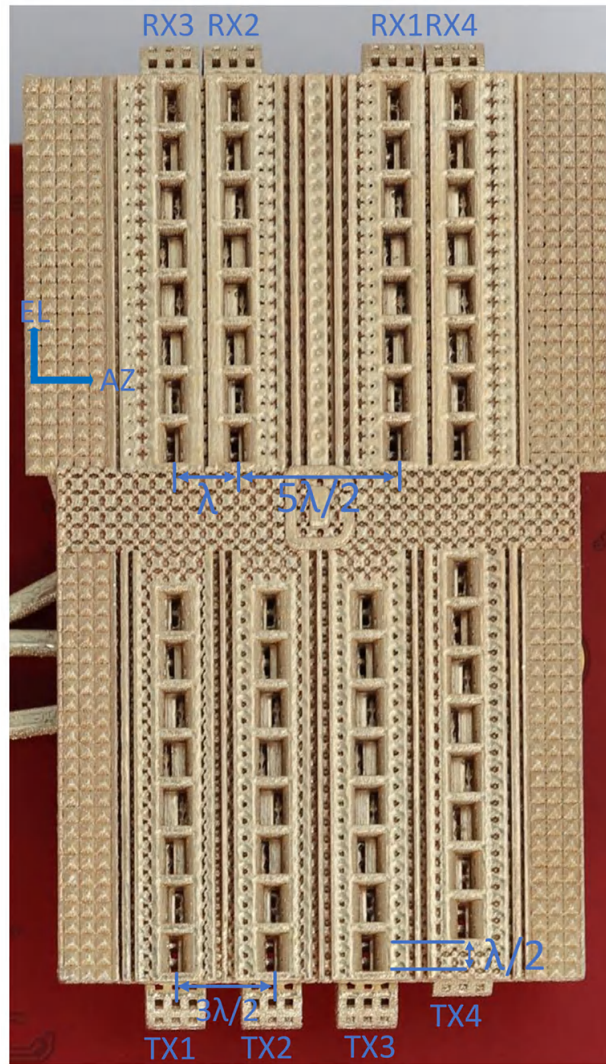
J5 Provides access to measure ripple on 1V8\_FILTERED (1.8V analog supply for AWR2544) voltage rail.

These connectors are not populated on the board by default. To populate these connectors with the appropriate part, please refer to the Schematic, BOM, and assembly files.

## 2.5 Antenna

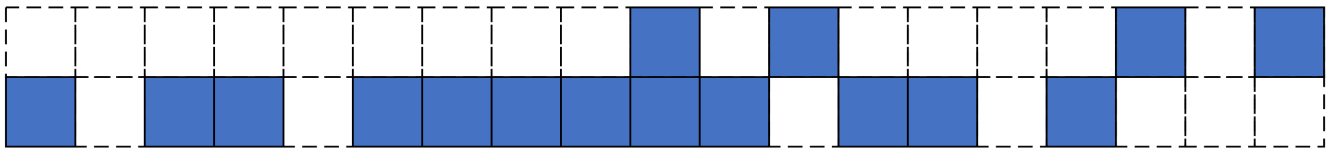
The AWR2544LOPEVM includes a 3D waveguide antenna produced by Golden Devices for the four receivers and four transmitters, which enables tracking multiple objects with their distance and angle information. This antenna design enables estimation of both azimuth and elevation angles, which enables object detection in a 3-D plane (see [Figure 2-13](#)). **Note: RX1 and RX4 are 180 degrees out of phase which should be compensated for in post processing.**





**Figure 2-13. AWR2544LOPEVM Antenna Design**

The antenna design shown in [Figure 2-13](#) results in the virtual antenna array shown in [Figure 2-14](#). The distance between two adjacent cells is  $\lambda/2$ .



**Figure 2-14. Virtual Antenna Array**

The antenna peak gain is 15 dBi across the frequency band of 76 to 81 GHz. The radiation pattern of the antenna in the horizontal plan (H-plane) and elevation plan (E-plane) is as shown in [Figure 2-15](#) and [Figure 2-16](#), respectively.

The beamwidth of the antenna design can be determined from the radiation patterns provided below. For example, based on 3-dB drop in the gain as compared to bore sight, the horizontal 3dB-beamwidth is approximately  $\pm 35$  degrees (see [Figure 2-15](#)), and elevation 3dB-beamwidth is approximately  $\pm 3$  degrees (see [Figure 2-16](#)). Similarly, the horizontal 6 dB beamwidth is approximately  $\pm 42$  degrees (see [Figure 2-15](#)) and the elevation 6dB-beamwidth is approximately  $\pm 5$  degrees (see [Figure 2-16](#)).

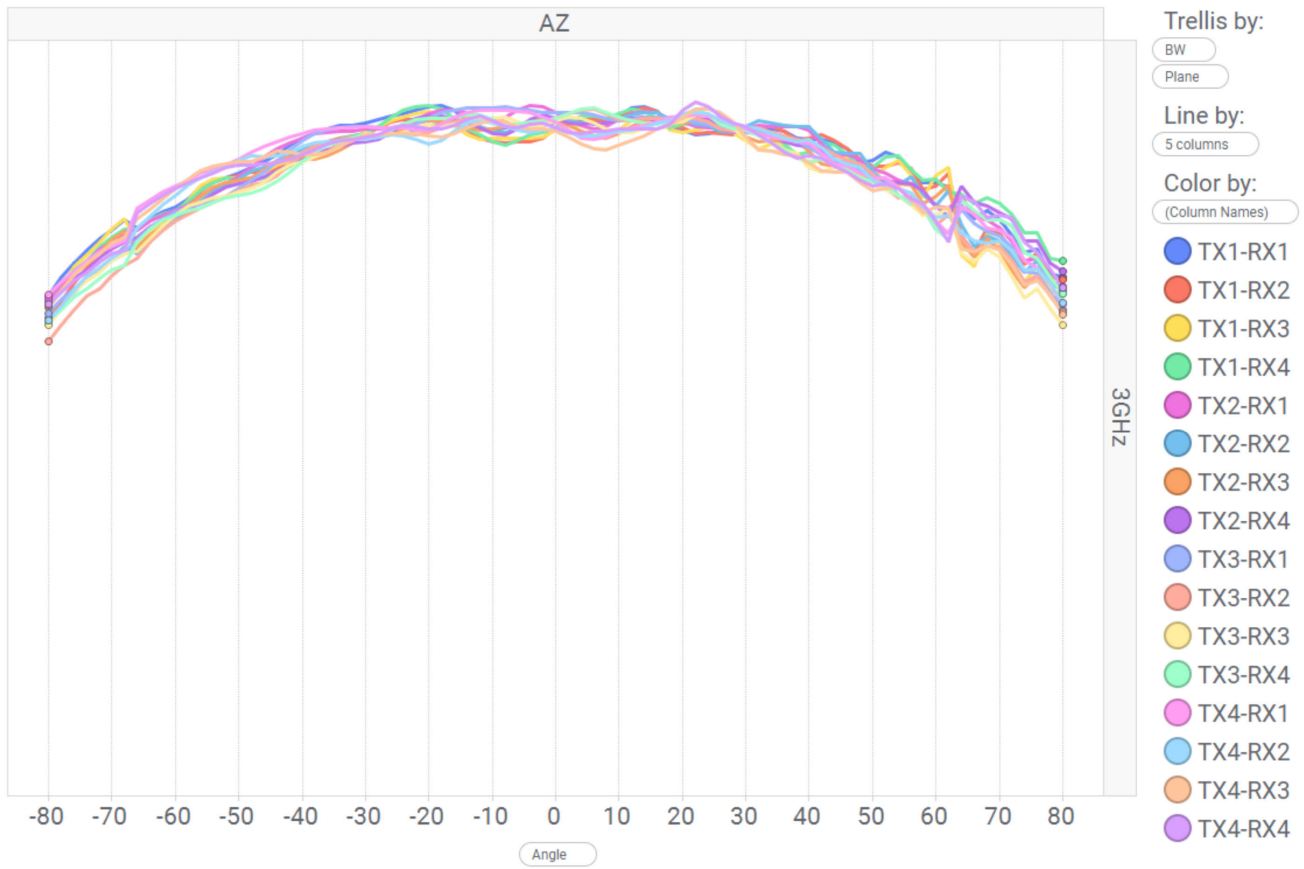


Figure 2-15. Azimuth Radiation Pattern (77 GHz to 80 GHz)

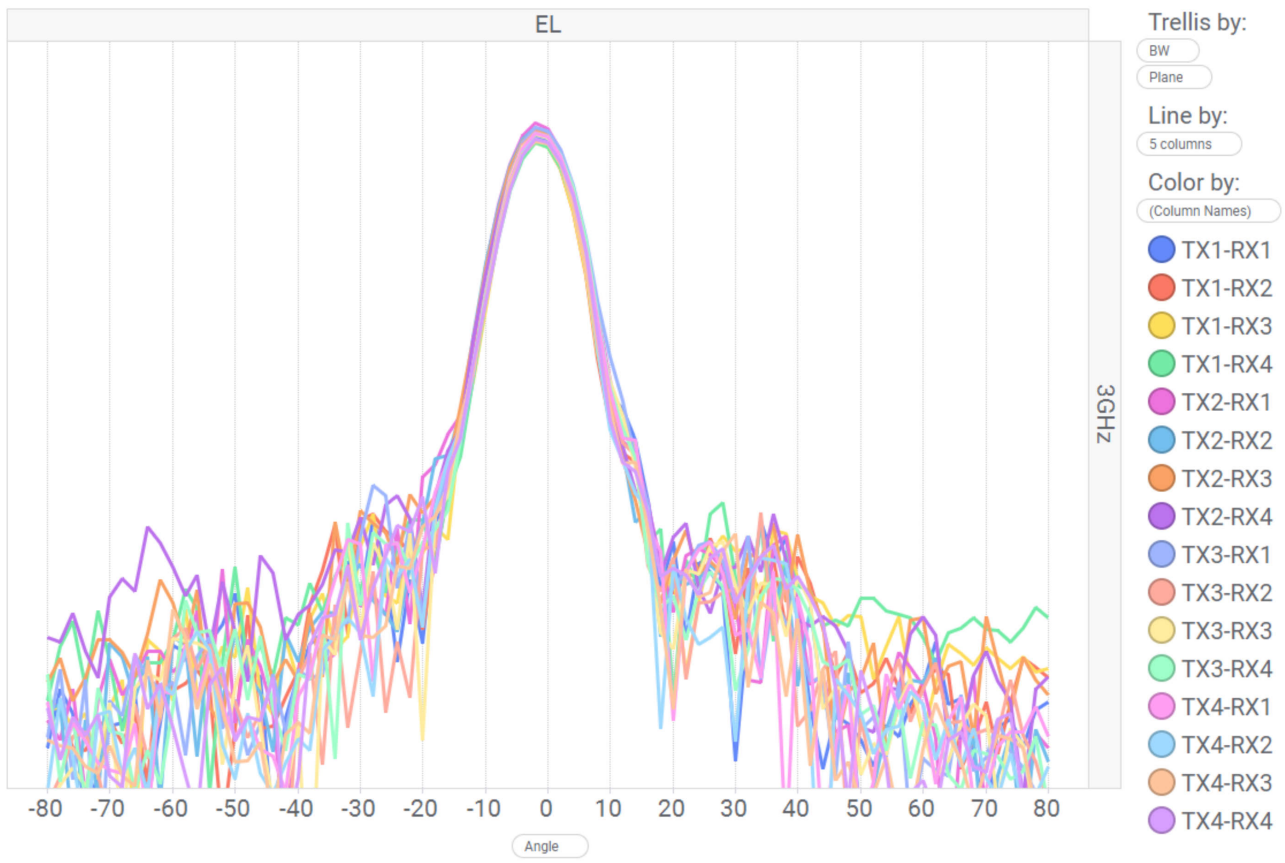


Figure 2-16. Elevation Radiation Pattern (77 GHz to 80 GHz)

## 2.6 PMIC

Power to the AWR2544 is provided by the LP87725-Q1 PMIC. This is a functional safety compliant PMIC that supports ASIL-B/SIL-2 applications. For more details, visit the LP87725-Q1 product page (<https://www.ti.com/product/LP87725-Q1>).

## 2.7 On-Board Sensors

The AWR2544LOPEVM provides access to an on-board temperature sensor (TMP112AIDRLR) and four on-board current sensors (INA228AIDGST). These sensors can be controlled by the radar via I2C. For details about the I2C addresses of these sensors, refer to [Section 2.10.3](#).

The current sensors are designed to measure the current being supplied to the various power rails of the AWR2544 device. For details on the supply nodes that can be measured using the current sensors, refer to [Table 2-7](#).

Table 2-7. Current Sensor Supply Details

Reference Designator	Supply Node	PCB Net Name	I2C Address
U9	AWR 1.2-V Supply	1V2	0x40
U11	AWR 1.8-V Supply	1V8	0x41
U12	AWR 3.3-V Supply	3V3	0x44
U22	AWR 1.0-V Supply	1V0	0x42

## 2.8 PC Connection

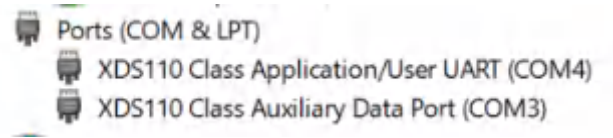
The PC connectivity is provided via two micro USB connectors, J8 and J10.

### 2.8.1 XDS110 Interface

J8 provides access to the onboard XDS110 (TM4C1294NCPDT) emulator. This connection provides the following interfaces to the PC:

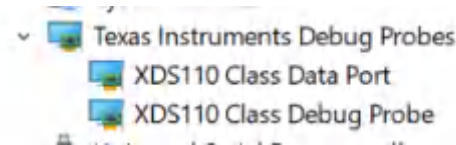
- JTAG for CCS connectivity
- MSS logger UART (can be used to get MSS code logs on the PC)

When the J8 USB is connected to the PC the device manager should recognize two XDS110 COM ports under Ports (COM & LPT).



**Figure 2-17. XDS110 COM Ports**

XDS110 debug probe and data port are detected under Texas Instruments Debug Probes.



**Figure 2-18. TI Debug Probes**

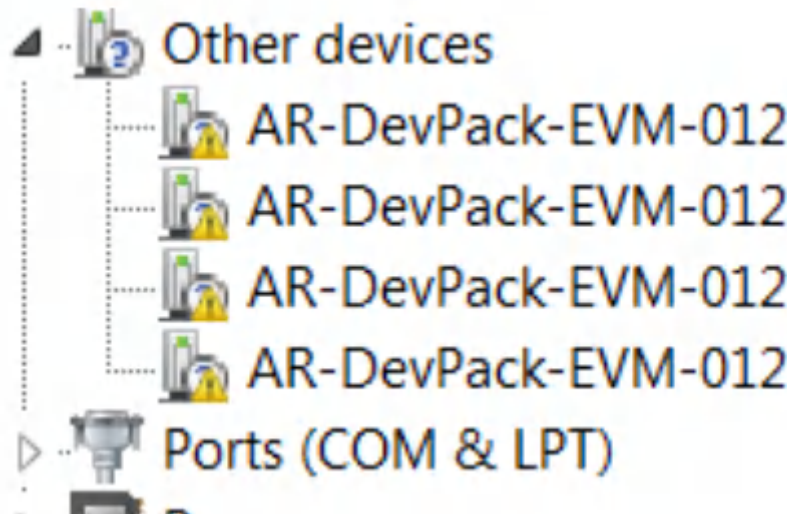
If the PC is unable to recognize the above COM ports, install the latest [EMUpack](#).

### 2.8.2 FTDI Interface

J10 provides access to the onboard FTDI ports. This provides the following interfaces to the PC:

- FTDI Port A -> MSS\_SPIA interface
- FTDI Port B-> MSS\_I2C interface; Host INTR signal.
- FTDI Port C -> BSS\_UART port; DSS\_UART port (not populated by default); NRESET and WARMRST control signals.
- FTDI Port D -> MSS\_RS232 port; SOP0, SOP1, and SOP2 control signals

When the USB is connected for the first time to the PC, Windows® maybe not be able to recognize the device. This is indicated in the device manager with yellow exclamation marks, as shown in [Figure 2-19](#).



**Figure 2-19. Uninstalled FTDI Drivers**

To install the devices, download the latest FTDI drivers available in the [mmwave SDK package](#). Right click on these devices, and update the drivers by pointing to the location where the FTDI drivers were installed (`C:\ti\mmwave_sdk_<version_number>\tools\ftdi`). This must be done for all four COM ports. When all four COM ports are installed, the device manager recognizes these devices and indicates the COM port numbers, as shown in [Figure 2-20](#).

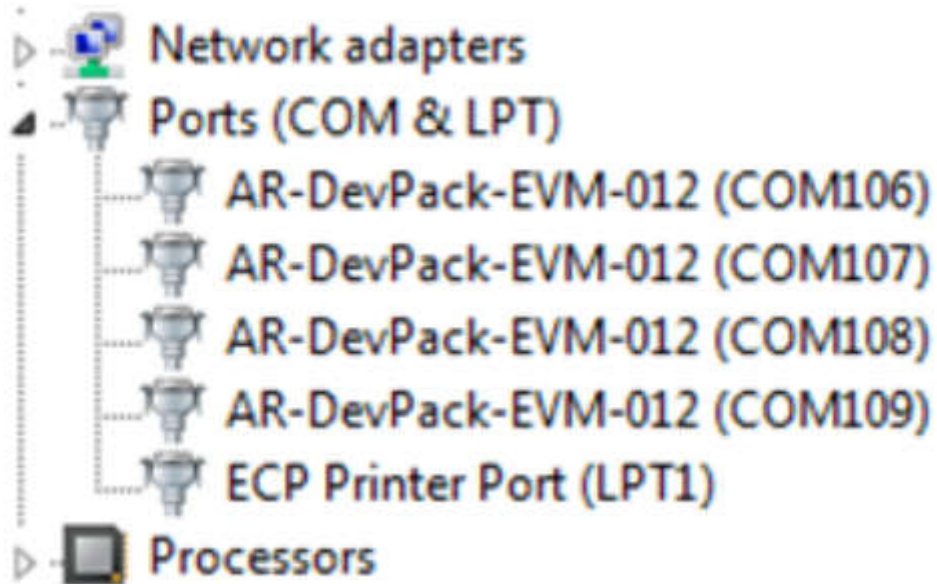
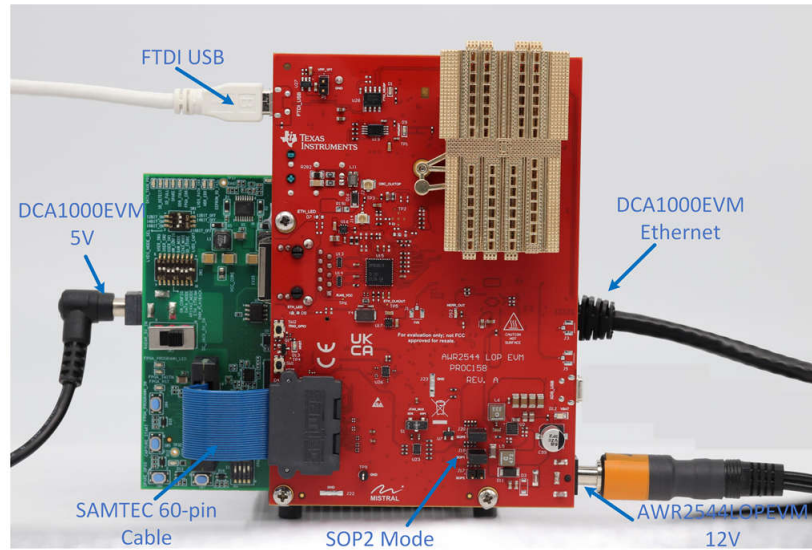


Figure 2-20. Installed FTDI Drivers

## 2.9 Connecting the AWR2544LOPEVM to the DCA1000 EVM

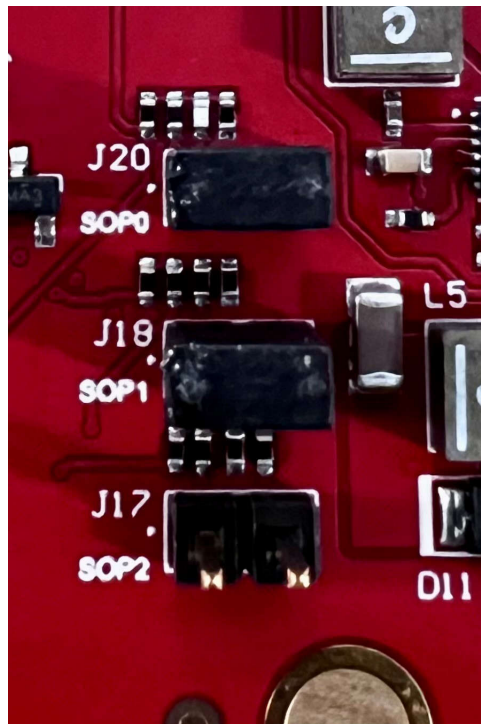
The AWR2544LOPEVM can be connected to the [DCA1000 EVM](#) platform to allow for LVDS data streaming. [Figure 2-21](#) shows the AWR2544LOPEVM interfaced to the DCA1000 EVM.



**Figure 2-21. AWR2544LOPEVM and DCA1000 EVM**

When using the AWR2544LOPEVM with the DCA1000 EVM, the following settings must be used.

1. Set the AWR2544LOPEVM to SOP2 mode.



**Figure 2-22. SOP2 Mode**

2. Set the AWR2544LOPEVM switch S2 to FTDI\_SPI Mode

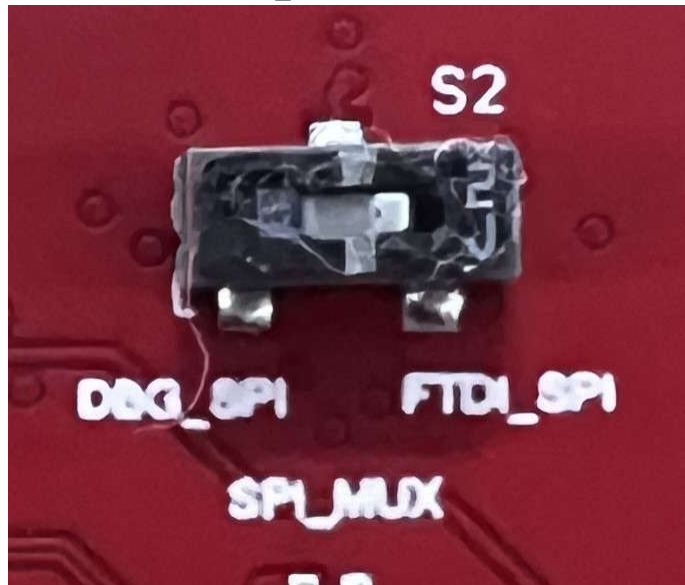
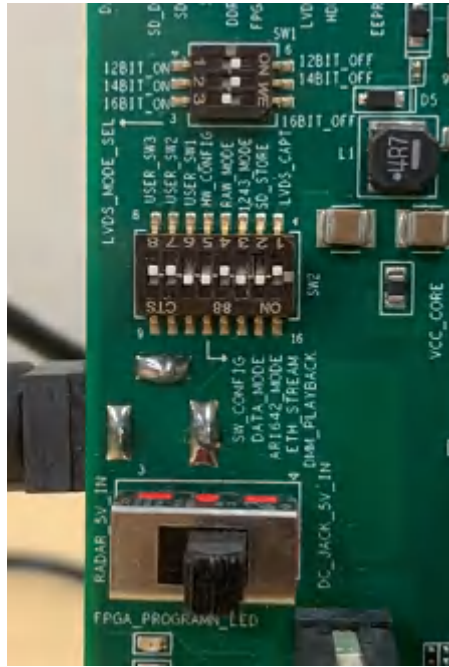


Figure 2-23. FTDI\_SPI Mode

- Set the DCA1000 EVM switches to the following configuration.



**Figure 2-24. DCA1000 Switch Settings**


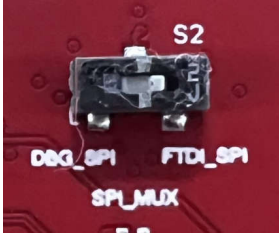
- The 12-V supply must be connected to J12 on the AWR2544LOPEVM
- A 5-V supply must be connected to J2 on the DCA1000 EVM
- A micro USB cable must be connected to the FTDI port on the AWR2544LOPEVM (J10)
- The Samtec ribbon cable must be connected to J7 on the AWR2544LOPEVM and J3 on the DCA1000 EVM
- An RJ45 cable must be connected to J6 on the DCA1000 EVM

## 2.10 Jumpers, Switches, and LEDs

### 2.10.1 Switches

The AWR2544LOPEVM contains two switches to mux various interfaces to different connectors on the EVM.

**Table 2-8. MUX Switches**

Reference	Usage	Comments	Image
S1	JTAG	When set to 'MIPI' position, the JTAG interface is routed to the MIPI 60-pin connector (J19). When set to 'XDS' position, the JTAG interface is routed to the XDS110 USB interface (J8)	
S2	SPI	When set to 'DBG_SPI' position, the MSS_SPIB interface is routed to the debug connector (J7). When set to 'FTDI_SPI', the MSS_SPIB interface is routed to the FTDI USB port (J10)	



### 2.10.2 Sense On Power (SOP) Jumpers (J17, J18, J20)

The AWR2544LOPEVM can be set to operate in different modes based on the state of the SOP [2:0] lines. These lines are sensed ONLY during boot up of the AWR2544 device. The state of the device is described in [Table 2-9](#).

A closed jumper refers to a '1' and open the jumper refers to a '0' state of the SOP signal going to the AWR2544 device.

**Note**

The SOP[2:0] pins can also be controlled via the on-board FTDI. In this case the FTDI settings would override the jumper settings.

**Table 2-9. SOP[0:2] Modes**

Reference	Usage	Comments
J17 (SOP 2), J18 (SOP 1), J20 (SOP 0)	SOP[2:0]	101 (SOP mode 5) = Flashing mode 001 (SOP mode 4) = Functional mode 000 (SOP mode 3) = Reserved 011 (SOP mode 2) = Development mode 010 (SOP mode 1) = Reserved



**Figure 2-25. SOP Jumpers**

Additionally, the SOP[4:3] signals defines the XTAL clock input as per the below configurations provided in [Table 2-10](#).

**Table 2-10. SOP[4:3] Modes**

Reference	Usage	Comments
R303, R312 Populated. R301, R309 unpopulated	SOP[4:3]	00 = 40 MHz
R301, R312 Populated. R303, R319 unpopulated		01 = 45.1584 MHz
R303, R309 Populated. R301, R312 unpopulated		10 = 49.152 MHz
R301, R309 Populated. R303, R312 unpopulated		11 = 50 MHz ( <b>Default State</b> )

### 2.10.3 I2C Connections

The board features temperature sensor for measuring onboard temperature, current sensors for current measurement for 1.2-V, 1.8-V, 3.3-V, 1V0\_RF1, and 1V0\_RF2 AWR2544 supply rails and EEPROM for storing board ID. These are connected to the AWR2544LOPEVM through I2C bus.



Table 2-11 shows the list of I2C devices available in AWR2544LOPEVM board and the address.

**Table 2-11. I2C Device Addresses**

Sensor Type	Reference Designator	Part Number	Target Address
Temp sensor	U24	TMP112AIDRLR	0x49
Current sensor for 3.3-V rail	U12	INA228AIDGST	0x44
Current sensor for 1.8-V rail	U11	INA228AIDGST	0x41
Current sensor for 1.2-V Digital rail	U9	INA228AIDGST	0x40
Current sensor for 1.0-V RF1 rail	U22	INA228AIDGST	0x42
Current sensor for 1.0-V RF2 rail	U30	INA228AIDGST	0x43
EEPROM	U28	CAV24C02WE-GT3	0x50


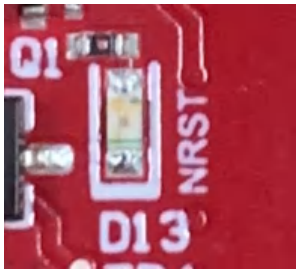


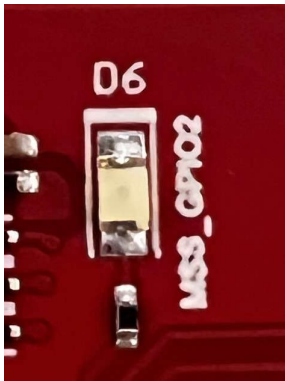
### 2.10.4 Push Buttons

**Table 2-12. Push Button Switches**

Reference	Usage	Comments	Image
SW1	RESET	This Switch is used to RESET the AWR2544, PMIC, XDS110 and FTDI device.	
SW2	GPIO_28	When pushed, the GPIO_28 shall be pulled to High.	

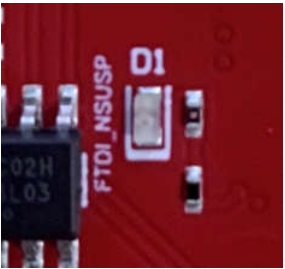
2.10.5 LEDs

**Table 2-13. On Board LEDs**

Ref	Color	Usage	Comments	Image
D12	Green	12-V supply indication	This LED indicates the presence of 12-V supply input	
D13	Yellow	NRST	This LED is used to indicate the state of NRST pin. If this LED is glowing, the device is out of reset.	
DS2	Red	NERROUT	Glowes if there is any HW error in the AWR2544 device	
D9	Yellow	WRMRST	Open drain fail safe warm reset signal	
D6	Green	GPIO_2	Glowes when the GPIO_2 is logic-1	

ADVANCE INFORMATION

**Table 2-13. On Board LEDs (continued)**

Ref	Color	Usage	Comments	Image
D1	Yellow	FTDI_SUSPEND_N	Glowes when FTDI is in suspend state	

ADVANCE INFORMATION

## 3 Design Files and Software Tools

### 3.1 Design Files

To view the schematics, assembly drawings, and BOM, see [AWR2544LOPEVM Schematic, Assembly, and BOM Files](#).

To view the design database and layout details, see [AWR2544LOPEVM Design Database Files](#).

### 3.2 Software, Development Tools, and Example Code

To enable quick development of end applications on the on-chip the on-chip ARM® Cortex®-R5F controller and hardware accelerator (HWA 1.5), TI provides a software development kit (SDK) that includes demo codes, software drivers, emulation packages for debug, and more. These can be found at [mmwave-sdk](#).

## 4 Revision History

NOTE: Page numbers for previous revisions may differ from page numbers in the current version.

DATE	REVISION	NOTES
November 2023	*	Initial Release

## STANDARD TERMS FOR EVALUATION MODULES

1. *Delivery:* TI delivers TI evaluation boards, kits, or modules, including any accompanying demonstration software, components, and/or documentation which may be provided together or separately (collectively, an "EVM" or "EVMs") to the User ("User") in accordance with the terms set forth herein. User's acceptance of the EVM is expressly subject to the following terms.
  - 1.1 EVMs are intended solely for product or software developers for use in a research and development setting to facilitate feasibility evaluation, experimentation, or scientific analysis of TI semiconductors products. EVMs have no direct function and are not finished products. EVMs shall not be directly or indirectly assembled as a part or subassembly in any finished product. For clarification, any software or software tools provided with the EVM ("Software") shall not be subject to the terms and conditions set forth herein but rather shall be subject to the applicable terms that accompany such Software
  - 1.2 EVMs are not intended for consumer or household use. EVMs may not be sold, sublicensed, leased, rented, loaned, assigned, or otherwise distributed for commercial purposes by Users, in whole or in part, or used in any finished product or production system.
2. *Limited Warranty and Related Remedies/Disclaimers:*
  - 2.1 These terms do not apply to Software. The warranty, if any, for Software is covered in the applicable Software License Agreement.
  - 2.2 TI warrants that the TI EVM will conform to TI's published specifications for ninety (90) days after the date TI delivers such EVM to User. Notwithstanding the foregoing, TI shall not be liable for a nonconforming EVM if (a) the nonconformity was caused by neglect, misuse or mistreatment by an entity other than TI, including improper installation or testing, or for any EVMs that have been altered or modified in any way by an entity other than TI, (b) the nonconformity resulted from User's design, specifications or instructions for such EVMs or improper system design, or (c) User has not paid on time. Testing and other quality control techniques are used to the extent TI deems necessary. TI does not test all parameters of each EVM. User's claims against TI under this Section 2 are void if User fails to notify TI of any apparent defects in the EVMs within ten (10) business days after delivery, or of any hidden defects with ten (10) business days after the defect has been detected.
  - 2.3 TI's sole liability shall be at its option to repair or replace EVMs that fail to conform to the warranty set forth above, or credit User's account for such EVM. TI's liability under this warranty shall be limited to EVMs that are returned during the warranty period to the address designated by TI and that are determined by TI not to conform to such warranty. If TI elects to repair or replace such EVM, TI shall have a reasonable time to repair such EVM or provide replacements. Repaired EVMs shall be warranted for the remainder of the original warranty period. Replaced EVMs shall be warranted for a new full ninety (90) day warranty period.

### **WARNING**

**Evaluation Kits are intended solely for use by technically qualified, professional electronics experts who are familiar with the dangers and application risks associated with handling electrical mechanical components, systems, and subsystems.**

**User shall operate the Evaluation Kit within TI's recommended guidelines and any applicable legal or environmental requirements as well as reasonable and customary safeguards. Failure to set up and/or operate the Evaluation Kit within TI's recommended guidelines may result in personal injury or death or property damage. Proper set up entails following TI's instructions for electrical ratings of interface circuits such as input, output and electrical loads.**

**NOTE:**

**EXPOSURE TO ELECTROSTATIC DISCHARGE (ESD) MAY CAUSE DEGRADATION OR FAILURE OF THE EVALUATION KIT; TI RECOMMENDS STORAGE OF THE EVALUATION KIT IN A PROTECTIVE ESD BAG.**

### 3 Regulatory Notices:

#### 3.1 United States

##### 3.1.1 Notice applicable to EVMs not FCC-Approved:

**FCC NOTICE:** This kit is designed to allow product developers to evaluate electronic components, circuitry, or software associated with the kit to determine whether to incorporate such items in a finished product and software developers to write software applications for use with the end product. This kit is not a finished product and when assembled may not be resold or otherwise marketed unless all required FCC equipment authorizations are first obtained. Operation is subject to the condition that this product not cause harmful interference to licensed radio stations and that this product accept harmful interference. Unless the assembled kit is designed to operate under part 15, part 18 or part 95 of this chapter, the operator of the kit must operate under the authority of an FCC license holder or must secure an experimental authorization under part 5 of this chapter.

##### 3.1.2 For EVMs annotated as FCC – FEDERAL COMMUNICATIONS COMMISSION Part 15 Compliant:

#### **CAUTION**

This device complies with part 15 of the FCC Rules. Operation is subject to the following two conditions: (1) This device may not cause harmful interference, and (2) this device must accept any interference received, including interference that may cause undesired operation.

Changes or modifications not expressly approved by the party responsible for compliance could void the user's authority to operate the equipment.

#### **FCC Interference Statement for Class A EVM devices**

*NOTE: This equipment has been tested and found to comply with the limits for a Class A digital device, pursuant to part 15 of the FCC Rules. These limits are designed to provide reasonable protection against harmful interference when the equipment is operated in a commercial environment. This equipment generates, uses, and can radiate radio frequency energy and, if not installed and used in accordance with the instruction manual, may cause harmful interference to radio communications. Operation of this equipment in a residential area is likely to cause harmful interference in which case the user will be required to correct the interference at his own expense.*

#### **FCC Interference Statement for Class B EVM devices**

*NOTE: This equipment has been tested and found to comply with the limits for a Class B digital device, pursuant to part 15 of the FCC Rules. These limits are designed to provide reasonable protection against harmful interference in a residential installation. This equipment generates, uses and can radiate radio frequency energy and, if not installed and used in accordance with the instructions, may cause harmful interference to radio communications. However, there is no guarantee that interference will not occur in a particular installation. If this equipment does cause harmful interference to radio or television reception, which can be determined by turning the equipment off and on, the user is encouraged to try to correct the interference by one or more of the following measures:*

- Reorient or relocate the receiving antenna.
- Increase the separation between the equipment and receiver.
- Connect the equipment into an outlet on a circuit different from that to which the receiver is connected.
- Consult the dealer or an experienced radio/TV technician for help.

#### 3.2 Canada

##### 3.2.1 For EVMs issued with an Industry Canada Certificate of Conformance to RSS-210 or RSS-247

#### **Concerning EVMs Including Radio Transmitters:**

This device complies with Industry Canada license-exempt RSSs. Operation is subject to the following two conditions:

(1) this device may not cause interference, and (2) this device must accept any interference, including interference that may cause undesired operation of the device.

#### **Concernant les EVMs avec appareils radio:**

Le présent appareil est conforme aux CNR d'Industrie Canada applicables aux appareils radio exempts de licence. L'exploitation est autorisée aux deux conditions suivantes: (1) l'appareil ne doit pas produire de brouillage, et (2) l'utilisateur de l'appareil doit accepter tout brouillage radioélectrique subi, même si le brouillage est susceptible d'en compromettre le fonctionnement.

#### **Concerning EVMs Including Detachable Antennas:**

Under Industry Canada regulations, this radio transmitter may only operate using an antenna of a type and maximum (or lesser) gain approved for the transmitter by Industry Canada. To reduce potential radio interference to other users, the antenna type and its gain should be so chosen that the equivalent isotropically radiated power (e.i.r.p.) is not more than that necessary for successful communication. This radio transmitter has been approved by Industry Canada to operate with the antenna types listed in the user guide with the maximum permissible gain and required antenna impedance for each antenna type indicated. Antenna types not included in this list, having a gain greater than the maximum gain indicated for that type, are strictly prohibited for use with this device.

### Concernant les EVMs avec antennes détachables

Conformément à la réglementation d'Industrie Canada, le présent émetteur radio peut fonctionner avec une antenne d'un type et d'un gain maximal (ou inférieur) approuvé pour l'émetteur par Industrie Canada. Dans le but de réduire les risques de brouillage radioélectrique à l'intention des autres utilisateurs, il faut choisir le type d'antenne et son gain de sorte que la puissance isotrope rayonnée équivalente (p.i.r.e.) ne dépasse pas l'intensité nécessaire à l'établissement d'une communication satisfaisante. Le présent émetteur radio a été approuvé par Industrie Canada pour fonctionner avec les types d'antenne énumérés dans le manuel d'usage et ayant un gain admissible maximal et l'impédance requise pour chaque type d'antenne. Les types d'antenne non inclus dans cette liste, ou dont le gain est supérieur au gain maximal indiqué, sont strictement interdits pour l'exploitation de l'émetteur.

#### 3.3 Japan

3.3.1 *Notice for EVMs delivered in Japan:* Please see [http://www.tij.co.jp/lstds/ti\\_ja/general/eStore/notice\\_01.page](http://www.tij.co.jp/lstds/ti_ja/general/eStore/notice_01.page) 日本国内に輸入される評価用キット、ボードについては、次のところをご覧ください。

<https://www.ti.com/ja-jp/legal/notice-for-evaluation-kits-delivered-in-japan.html>

3.3.2 *Notice for Users of EVMs Considered "Radio Frequency Products" in Japan:* EVMs entering Japan may not be certified by TI as conforming to Technical Regulations of Radio Law of Japan.

If User uses EVMs in Japan, not certified to Technical Regulations of Radio Law of Japan, User is required to follow the instructions set forth by Radio Law of Japan, which includes, but is not limited to, the instructions below with respect to EVMs (which for the avoidance of doubt are stated strictly for convenience and should be verified by User):

1. Use EVMs in a shielded room or any other test facility as defined in the notification #173 issued by Ministry of Internal Affairs and Communications on March 28, 2006, based on Sub-section 1.1 of Article 6 of the Ministry's Rule for Enforcement of Radio Law of Japan,
2. Use EVMs only after User obtains the license of Test Radio Station as provided in Radio Law of Japan with respect to EVMs, or
3. Use of EVMs only after User obtains the Technical Regulations Conformity Certification as provided in Radio Law of Japan with respect to EVMs. Also, do not transfer EVMs, unless User gives the same notice above to the transferee. Please note that if User does not follow the instructions above, User will be subject to penalties of Radio Law of Japan.

【無線電波を送信する製品の開発キットをお使いになる際の注意事項】 開発キットの中には技術基準適合証明を受けていないものがあります。技術適合証明を受けていないものご使用に際しては、電波法遵守のため、以下のいずれかの措置を取っていただく必要がありますのでご注意ください。

1. 電波法施行規則第6条第1項第1号に基づく平成18年3月28日総務省告示第173号で定められた電波暗室等の試験設備でご使用いただく。
2. 実験局の免許を取得後ご使用いただく。
3. 技術基準適合証明を取得後ご使用いただく。

なお、本製品は、上記の「ご使用にあたっての注意」を譲渡先、移転先に通知しない限り、譲渡、移転できないものとします。

上記を遵守頂けない場合は、電波法の罰則が適用される可能性があることをご留意ください。日本テキサス・イ

ンスツルメンツ株式会社

東京都新宿区西新宿 6 丁目 2 4 番 1 号

西新宿三井ビル

3.3.3 *Notice for EVMs for Power Line Communication:* Please see [http://www.tij.co.jp/lstds/ti\\_ja/general/eStore/notice\\_02.page](http://www.tij.co.jp/lstds/ti_ja/general/eStore/notice_02.page)

電力線搬送波通信についての開発キットをお使いになる際の注意事項については、次のところをご覧ください。 <https://www.ti.com/ja-jp/legal/notice-for-evaluation-kits-for-power-line-communication.html>

#### 3.4 European Union

3.4.1 *For EVMs subject to EU Directive 2014/30/EU (Electromagnetic Compatibility Directive):*

This is a class A product intended for use in environments other than domestic environments that are connected to a low-voltage power-supply network that supplies buildings used for domestic purposes. In a domestic environment this product may cause radio interference in which case the user may be required to take adequate measures.



- 
4. *EVM Use Restrictions and Warnings:*
    - 4.1 EVMS ARE NOT FOR USE IN FUNCTIONAL SAFETY AND/OR SAFETY CRITICAL EVALUATIONS, INCLUDING BUT NOT LIMITED TO EVALUATIONS OF LIFE SUPPORT APPLICATIONS.
    - 4.2 User must read and apply the user guide and other available documentation provided by TI regarding the EVM prior to handling or using the EVM, including without limitation any warning or restriction notices. The notices contain important safety information related to, for example, temperatures and voltages.
    - 4.3 *Safety-Related Warnings and Restrictions:*
      - 4.3.1 User shall operate the EVM within TI's recommended specifications and environmental considerations stated in the user guide, other available documentation provided by TI, and any other applicable requirements and employ reasonable and customary safeguards. Exceeding the specified performance ratings and specifications (including but not limited to input and output voltage, current, power, and environmental ranges) for the EVM may cause personal injury or death, or property damage. If there are questions concerning performance ratings and specifications, User should contact a TI field representative prior to connecting interface electronics including input power and intended loads. Any loads applied outside of the specified output range may also result in unintended and/or inaccurate operation and/or possible permanent damage to the EVM and/or interface electronics. Please consult the EVM user guide prior to connecting any load to the EVM output. If there is uncertainty as to the load specification, please contact a TI field representative. During normal operation, even with the inputs and outputs kept within the specified allowable ranges, some circuit components may have elevated case temperatures. These components include but are not limited to linear regulators, switching transistors, pass transistors, current sense resistors, and heat sinks, which can be identified using the information in the associated documentation. When working with the EVM, please be aware that the EVM may become very warm.
      - 4.3.2 EVMs are intended solely for use by technically qualified, professional electronics experts who are familiar with the dangers and application risks associated with handling electrical mechanical components, systems, and subsystems. User assumes all responsibility and liability for proper and safe handling and use of the EVM by User or its employees, affiliates, contractors or designees. User assumes all responsibility and liability to ensure that any interfaces (electronic and/or mechanical) between the EVM and any human body are designed with suitable isolation and means to safely limit accessible leakage currents to minimize the risk of electrical shock hazard. User assumes all responsibility and liability for any improper or unsafe handling or use of the EVM by User or its employees, affiliates, contractors or designees.
    - 4.4 User assumes all responsibility and liability to determine whether the EVM is subject to any applicable international, federal, state, or local laws and regulations related to User's handling and use of the EVM and, if applicable, User assumes all responsibility and liability for compliance in all respects with such laws and regulations. User assumes all responsibility and liability for proper disposal and recycling of the EVM consistent with all applicable international, federal, state, and local requirements.
  5. *Accuracy of Information:* To the extent TI provides information on the availability and function of EVMs, TI attempts to be as accurate as possible. However, TI does not warrant the accuracy of EVM descriptions, EVM availability or other information on its websites as accurate, complete, reliable, current, or error-free.
  6. *Disclaimers:*
    - 6.1 EXCEPT AS SET FORTH ABOVE, EVMS AND ANY MATERIALS PROVIDED WITH THE EVM (INCLUDING, BUT NOT LIMITED TO, REFERENCE DESIGNS AND THE DESIGN OF THE EVM ITSELF) ARE PROVIDED "AS IS" AND "WITH ALL FAULTS." TI DISCLAIMS ALL OTHER WARRANTIES, EXPRESS OR IMPLIED, REGARDING SUCH ITEMS, INCLUDING BUT NOT LIMITED TO ANY EPIDEMIC FAILURE WARRANTY OR IMPLIED WARRANTIES OF MERCHANTABILITY OR FITNESS FOR A PARTICULAR PURPOSE OR NON-INFRINGEMENT OF ANY THIRD PARTY PATENTS, COPYRIGHTS, TRADE SECRETS OR OTHER INTELLECTUAL PROPERTY RIGHTS.
    - 6.2 EXCEPT FOR THE LIMITED RIGHT TO USE THE EVM SET FORTH HEREIN, NOTHING IN THESE TERMS SHALL BE CONSTRUED AS GRANTING OR CONFERRING ANY RIGHTS BY LICENSE, PATENT, OR ANY OTHER INDUSTRIAL OR INTELLECTUAL PROPERTY RIGHT OF TI, ITS SUPPLIERS/LICENSORS OR ANY OTHER THIRD PARTY, TO USE THE EVM IN ANY FINISHED END-USER OR READY-TO-USE FINAL PRODUCT, OR FOR ANY INVENTION, DISCOVERY OR IMPROVEMENT, REGARDLESS OF WHEN MADE, CONCEIVED OR ACQUIRED.
  7. *USER'S INDEMNITY OBLIGATIONS AND REPRESENTATIONS.* USER WILL DEFEND, INDEMNIFY AND HOLD TI, ITS LICENSORS AND THEIR REPRESENTATIVES HARMLESS FROM AND AGAINST ANY AND ALL CLAIMS, DAMAGES, LOSSES, EXPENSES, COSTS AND LIABILITIES (COLLECTIVELY, "CLAIMS") ARISING OUT OF OR IN CONNECTION WITH ANY HANDLING OR USE OF THE EVM THAT IS NOT IN ACCORDANCE WITH THESE TERMS. THIS OBLIGATION SHALL APPLY WHETHER CLAIMS ARISE UNDER STATUTE, REGULATION, OR THE LAW OF TORT, CONTRACT OR ANY OTHER LEGAL THEORY, AND EVEN IF THE EVM FAILS TO PERFORM AS DESCRIBED OR EXPECTED.

8. *Limitations on Damages and Liability:*

8.1 *General Limitations.* IN NO EVENT SHALL TI BE LIABLE FOR ANY SPECIAL, COLLATERAL, INDIRECT, PUNITIVE, INCIDENTAL, CONSEQUENTIAL, OR EXEMPLARY DAMAGES IN CONNECTION WITH OR ARISING OUT OF THESE TERMS OR THE USE OF THE EVMS , REGARDLESS OF WHETHER TI HAS BEEN ADVISED OF THE POSSIBILITY OF SUCH DAMAGES. EXCLUDED DAMAGES INCLUDE, BUT ARE NOT LIMITED TO, COST OF REMOVAL OR REINSTALLATION, ANCILLARY COSTS TO THE PROCUREMENT OF SUBSTITUTE GOODS OR SERVICES, RETESTING, OUTSIDE COMPUTER TIME, LABOR COSTS, LOSS OF GOODWILL, LOSS OF PROFITS, LOSS OF SAVINGS, LOSS OF USE, LOSS OF DATA, OR BUSINESS INTERRUPTION. NO CLAIM, SUIT OR ACTION SHALL BE BROUGHT AGAINST TI MORE THAN TWELVE (12) MONTHS AFTER THE EVENT THAT GAVE RISE TO THE CAUSE OF ACTION HAS OCCURRED.

8.2 *Specific Limitations.* IN NO EVENT SHALL TI'S AGGREGATE LIABILITY FROM ANY USE OF AN EVM PROVIDED HEREUNDER, INCLUDING FROM ANY WARRANTY, INDEMNITY OR OTHER OBLIGATION ARISING OUT OF OR IN CONNECTION WITH THESE TERMS, , EXCEED THE TOTAL AMOUNT PAID TO TI BY USER FOR THE PARTICULAR EVM(S) AT ISSUE DURING THE PRIOR TWELVE (12) MONTHS WITH RESPECT TO WHICH LOSSES OR DAMAGES ARE CLAIMED. THE EXISTENCE OF MORE THAN ONE CLAIM SHALL NOT ENLARGE OR EXTEND THIS LIMIT.

9. *Return Policy.* Except as otherwise provided, TI does not offer any refunds, returns, or exchanges. Furthermore, no return of EVM(s) will be accepted if the package has been opened and no return of the EVM(s) will be accepted if they are damaged or otherwise not in a resalable condition. If User feels it has been incorrectly charged for the EVM(s) it ordered or that delivery violates the applicable order, User should contact TI. All refunds will be made in full within thirty (30) working days from the return of the components(s), excluding any postage or packaging costs.

10. *Governing Law:* These terms and conditions shall be governed by and interpreted in accordance with the laws of the State of Texas, without reference to conflict-of-laws principles. User agrees that non-exclusive jurisdiction for any dispute arising out of or relating to these terms and conditions lies within courts located in the State of Texas and consents to venue in Dallas County, Texas. Notwithstanding the foregoing, any judgment may be enforced in any United States or foreign court, and TI may seek injunctive relief in any United States or foreign court.

Mailing Address: Texas Instruments, Post Office Box 655303, Dallas, Texas 75265  
Copyright © 2023, Texas Instruments Incorporated

## IMPORTANT NOTICE AND DISCLAIMER

TI PROVIDES TECHNICAL AND RELIABILITY DATA (INCLUDING DATA SHEETS), DESIGN RESOURCES (INCLUDING REFERENCE DESIGNS), APPLICATION OR OTHER DESIGN ADVICE, WEB TOOLS, SAFETY INFORMATION, AND OTHER RESOURCES "AS IS" AND WITH ALL FAULTS, AND DISCLAIMS ALL WARRANTIES, EXPRESS AND IMPLIED, INCLUDING WITHOUT LIMITATION ANY IMPLIED WARRANTIES OF MERCHANTABILITY, FITNESS FOR A PARTICULAR PURPOSE OR NON-INFRINGEMENT OF THIRD PARTY INTELLECTUAL PROPERTY RIGHTS.

These resources are intended for skilled developers designing with TI products. You are solely responsible for (1) selecting the appropriate TI products for your application, (2) designing, validating and testing your application, and (3) ensuring your application meets applicable standards, and any other safety, security, regulatory or other requirements.

These resources are subject to change without notice. TI grants you permission to use these resources only for development of an application that uses the TI products described in the resource. Other reproduction and display of these resources is prohibited. No license is granted to any other TI intellectual property right or to any third party intellectual property right. TI disclaims responsibility for, and you will fully indemnify TI and its representatives against, any claims, damages, costs, losses, and liabilities arising out of your use of these resources.

TI's products are provided subject to [TI's Terms of Sale](#) or other applicable terms available either on [ti.com](https://www.ti.com) or provided in conjunction with such TI products. TI's provision of these resources does not expand or otherwise alter TI's applicable warranties or warranty disclaimers for TI products.

TI objects to and rejects any additional or different terms you may have proposed.

Mailing Address: Texas Instruments, Post Office Box 655303, Dallas, Texas 75265

Copyright © 2025, Texas Instruments Incorporated